

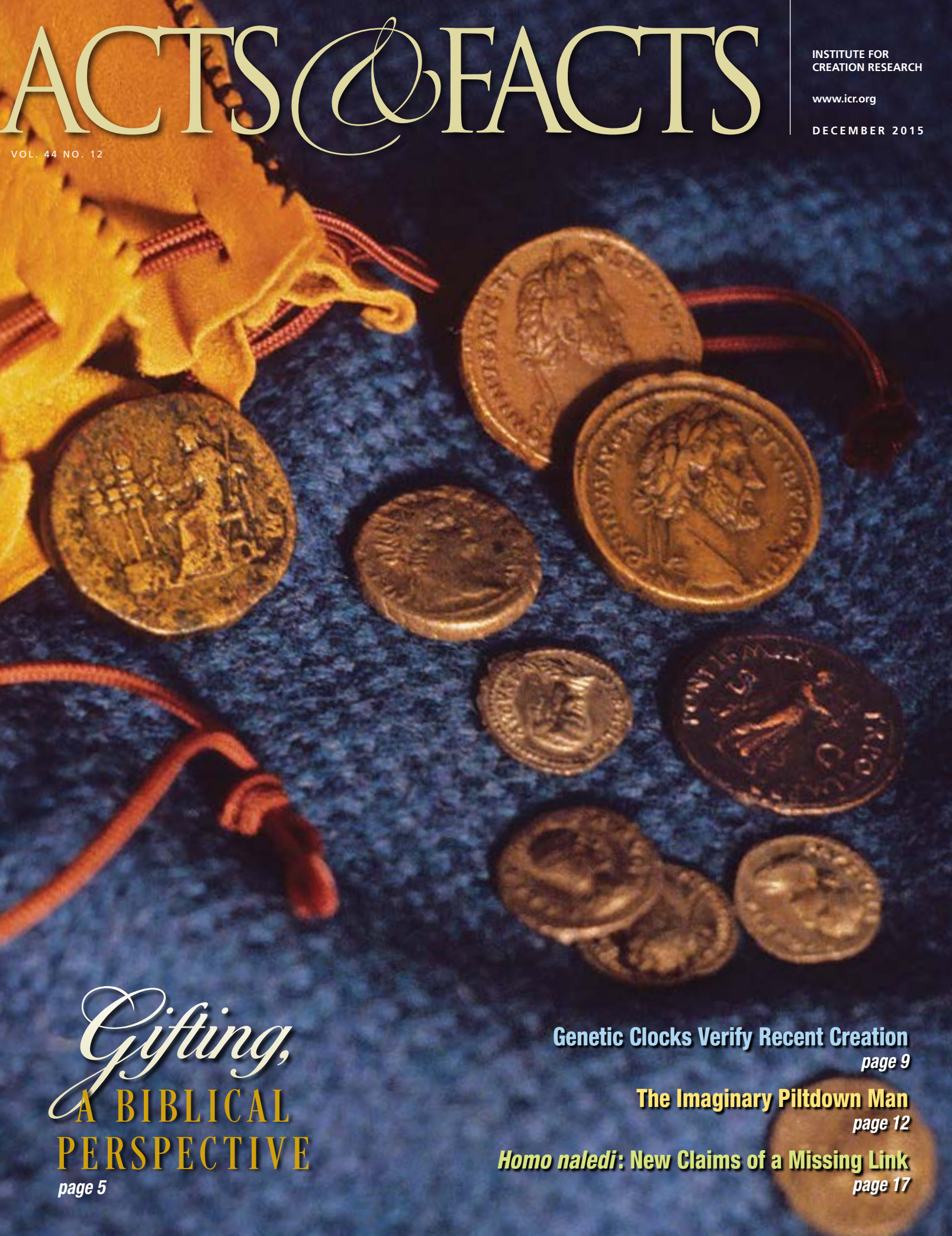
ACTS & FACTS

INSTITUTE FOR
CREATION RESEARCH

www.icr.org

DECEMBER 2015

VOL. 44 NO. 12



Gifts,
A BIBLICAL
PERSPECTIVE

page 5

Genetic Clocks Verify Recent Creation
page 9

The Imaginary Piltdown Man
page 12

Homo naledi: New Claims of a Missing Link
page 17



MADE IN HIS IMAGE

A four-episode DVD series on the complexities of the human body

This DVD series contains **English** closed captions and subtitles in **English, Spanish, Chinese, Arabic, and Korean!**

Español
中文
العربية
한국어



“God created man in His own image.”
— Genesis 1:27 —

Only \$39⁹⁹
DMIHI

Set includes one viewer guide.
Additional viewer guides available.

Made in His Image, ICR’s new DVD series, takes audiences on a journey through the most complex and miraculous creation on Earth—us! Featuring medical, engineering, and other experts, *Made in His Image* fascinates audiences with mind-blowing facts, dazzling imagery, and memorable illustrations.



Episode 1: The Miracle of Birth
Witness God’s incredible design from gestation to birth.



Episode 2: The Marvel of Eyes
Learn about the intricate engineering of the human visual system.



Episode 3: Uniquely Human Hands
Human hands display purposeful and sophisticated design.



Episode 4: Beauty in Motion
This final episode highlights complex design that confirms divine creation.

Please add shipping and handling to all orders.

To order, call **800.628.7640** or visit **ICR.org/store**
ICR.org/MadeInHisImage

Published by
INSTITUTE FOR CREATION RESEARCH
P. O. Box 59029
Dallas, TX 75229
214.615.8300
www.icr.org

EXECUTIVE EDITOR

Jayne Durant

SENIOR EDITOR

Beth Mull

EDITORS

Michael Stamp
Truett Billups
Christy Hardy

DESIGNER

Dennis Davidson

No articles may be reprinted in whole or in part without obtaining permission from ICR.

Copyright © 2015
Institute for Creation Research



5



9



12



18

FEATURE

5 Gifting, a Biblical Perspective

HENRY M. MORRIS III, D.MIN.

RESEARCH

9 Genetic Clocks Verify Recent Creation

JEFFREY P. TOMKINS, PH.D.

IMPACT

12 The Imaginary Piltown Man

RANDY J. GULIUZZA, P.E., M.D.

BACK TO GENESIS

16 Soft-Tissue Time Paradox

VERNON R. CUPPS, PH.D.

17 *Homo naledi*: New Claims of a Missing Link

TIM CLAREY, PH.D.

18 The Perfect Balance of Our Solar System

FRANK SHERWIN, M.A.

CREATION Q & A

20 Was Adam a Real Person?

BRIAN THOMAS, M.S.

LEGACY

21 Standing on the Word

STEWARDSHIP

22 For Richer, for Poorer

HENRY M. MORRIS IV



Moments at the Table

A fun benefit of having several daughters is that they enjoy talking. Girl talk. Looooong conversations. Giggles. Sitting around the table laughing, telling stories, and yes, even revealing prized secrets.

The secrets would remain secrets if their keepers didn't trust those around them. Disappointments, plans, and dreams would remain private. And yet, at the table, people talk. They confide in those they trust. I cherish those moments around the table.

As believers, we sometimes take for granted the gift God has given by revealing Himself to us. Jesus didn't reveal Himself to everyone. He spoke briefly with authority to Pontius Pilate, but there came a point when He gave no answer (John 19:9). There were times when He was silent before His accusers (Mark 14:60-61).

He didn't explain the meaning of His parables to the teeming crowds or religious leaders of the day, the scribes and Pharisees (Matthew 13:10-13, 34-35), and yet Jesus patiently explained them to His disciples. He spoke openly with tax collectors at their tables. He spent time by the well, talking with a woman He had never met. He lingered in the homes of friends.

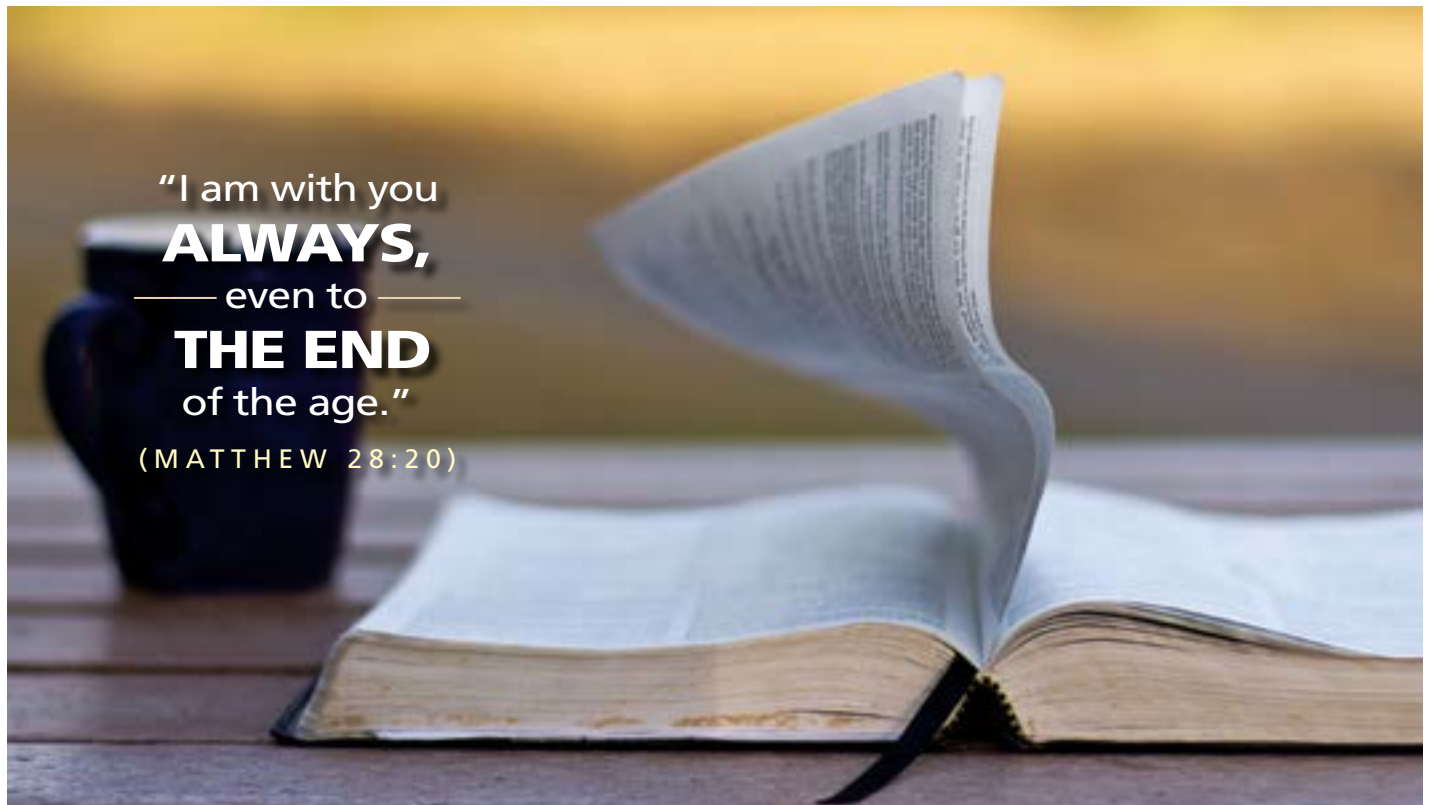
When the disciples asked why He explained the parables to them but not others, Jesus responded, "Because it has been given to

you to know the mysteries of the kingdom of heaven, but to them it has not been given. For whoever has, to him more will be given, and he will have abundance; but whoever does not have, even what he has will be taken away from him. Therefore I speak to them in parables, because seeing they do not see, and hearing they do not hear, nor do they understand" (Matthew 13:10-13).

He entrusts *us* with the mysteries of the Kingdom. He intimately reveals Himself to *us*. He lingers at our tables, trusts us with His Word, and opens our eyes to heavenly secrets. Do we realize how precious it is that God reveals Himself, His ways, and His purposes to us? To you? Do we take that for granted?

As Dr. Henry M. Morris III says in his article this month, Jesus was the "greatest gift ever given" ("Gifting, a Biblical Perspective," pages 5-7). Jesus offers Himself—His very presence—to those who seek Him. Enjoy the gift of God's presence this Christmas. Spend time around His table and cherish the moments with Him. I hope you and your family have a very Merry Christmas!

Jayme Durant
EXECUTIVE EDITOR



"I am with you
ALWAYS,
— even to —
THE END
of the age."

(MATTHEW 28:20)

A collection of gold coins and a leather pouch on a blue background. The coins are scattered across the frame, some showing intricate designs. The leather pouch is in the upper left corner, with a red cord. The background is a textured blue fabric.

Gifts, A BIBLICAL PERSPECTIVE

HENRY M. MORRIS III, D. MIN.

Most of us are aware that the Lord Jesus Christ was the greatest gift ever given to humanity. This is the season when we remember His incarnation and sacrifice and wonder at the salvation made possible by that gift. Those of us who have been twice born are especially touched during this time of honoring God's gift to us, and we try, in our own small ways, to express some recognition of that incomparable act by giving tokens of our love to friends and family. Many of us also try to give some extra gifts to our church and to the Christian organizations we have grown to respect as well. (Please accept our thanks, by the way, for those of you who have shared with ICR over the years.)



*Gift*ing is a heart matter—
and the focus of the *heart*
is what brings about
the return on the *gift*.



But I wanted to challenge you to see gifting from a different perspective this season. To begin with, godly gifting is not giving in such a way that seeks the recognition of other men. Jesus made that perfectly clear:

“Take heed that you do not do your charitable deeds before men, to be seen by them. Otherwise you have no reward from your Father in heaven. Therefore, when you do a charitable deed, do not sound a trumpet before you as the hypocrites do in the synagogues and in the streets, that they may have glory from men. Assuredly, I say to you, they have their reward. But when you do a charitable deed, do not let your left hand know what your right hand is doing, that your charitable deed may be in secret; and your Father who sees in secret will Himself reward you openly.” (Matthew 6:1-4)

Unfortunately, contributing openly is often the easiest way to give. We are all approached for various causes, and it seems like the standard motivational pitch promises some form of special recognition—perhaps being honored as part of an inner circle or given a permanent plaque on the wall. Please don’t misunderstand me, most organizations offering such motivations are doing so in good faith, and many who are motivated by those enticements are not doing wrong—but they just may be missing out on a much greater reward.

Think with me a minute about the gift the Lord Jesus gave at the request of the Father. Jesus had nothing to gain for Himself except the “joy that was set before Him” (Hebrews 12:2). In order to “gift” Himself,

He had to empty Himself (Philippians 2:7) and allow Himself to become flesh (John 1:14) and then endure the horrors of crucifixion—not to mention the unspeakable dread of becoming “sin for us” (2 Corinthians 5:21). No, there was nothing in this world for Him to gain from His gift except the certain knowledge that His loving act would bring “many sons to glory” (Hebrews 2:10).

And here’s another thought. No gift is given without the agreement and participation of others—even the priceless gift of the Lord Jesus. The heavenly Father had to give His “only begotten son” (John 3:16). The sweet virgin Mary had to yield herself to God in an uncertain and unknown way, and endure the gossip and disdain of many for the rest of her life. And gentle Joseph, a good man, caught within a hyper-spiritual and political culture that knew almost nothing of God’s grace, was willing to cover over what he initially thought was infidelity on Mary’s part until he was given the truth directly from Gabriel. Then, he married and protected her, and he restrained himself until the Lord Jesus was born. Even Gabriel was caught up in this gift since he was the messenger to the human agents. No gift is given without others being involved.

Then there were the shepherds, Simeon, Anna, Elizabeth, John the Baptist, and the disciples—a godly gift continues to work

in the lives of others. This, the greatest gift, really never ceases to give.

Do you remember the poor widow who placed her last penny into the treasury? She was surrounded by crowds that were showing off their wealth, dropping their gold and silver into the big treasury box lying at the feet of the pompous priests ensconced in their liturgical robes and weighed down with the jewelry of religious paraphernalia for all to “ooh and aah” over. One by one, the givers came, slowly strutting up to the dais to trickle their coins into the chest.

Jesus and His disciples watched, witnessing the show of spirituality as the givers received the acknowledgments from the clerics. Then, sliding quietly out of the crowd, the widowed woman came. It is likely the crowd didn’t even notice her, but if they did they would probably only have been annoyed that she got in the way of the parade of celebrities. I suspect she quietly bowed



We must focus on *legacy* tools that will last far beyond our short lifetimes and reach into the coming *generations*. Buildings, properties, and museums have a place among those tools. But this is the *biblical* perspective that must be understood:
Godly gifting is *heart* gifting.

her head as she slipped her two little pennies into the big box.

Those tiny bronze coins didn't make much noise. No one turned to look. She was the only one nearby with a sincere smile on her face—except for Jesus. He called His disciples over to Him and said:

“Assuredly, I say to you that this poor widow has put in more than all those who have given to the treasury; for they all put in out of their abundance, but she out of her poverty put in all that she had, her whole livelihood.” (Mark 12:43-44)

And herein is the gifting principle of Scripture. The actual dollar value is of no consequence. God's measure is what it costs the giver. That's the basic reason why the biblical standard of giving is the tithe. That 10 percent is a measure that reaches across all amounts of value, from the poorest to the wealthiest. Gifting is a heart mat-

ter—and the focus of the heart is what brings about the return on the gift. If the heart seeks to please people, then it is from people that we will receive our recognition and reward. Oh yes, there are times when our genuine love for someone prompts us to give money, time, assistance, or ourselves in service because we love them and want to help them. But that kind of gift doesn't want a return from the one we serve. We give—with no thought of reward—simply because we love!

Just so, the Lord Jesus gave Himself for us! He gifted all He had to give so that we could live in righteousness forever. That widow gifted all she had because she loved the Kingdom and totally trusted that her loving God would take care of her forever. Would to God something of that kind of gifting would permeate our hearts. Then the Holy Spirit could prompt us to give to the right places at the right times with the right amounts.

King David penned a passionate poem about the purpose for giving.

We will not hide them from their children,
shewing to the generation to come the praises of the Lord,
and his strength, and his wonderful works that he hath done.

...that they should make them known to their children:

That the generation to come might know them, even the children which should be born; who should arise and declare them to their children: That they might set their hope in God,

and not forget the works of God...
(Psalm 78:4-7)

The works of God need to be transmitted down through the ages to all generations! It's not enough merely to remember them yourself. It isn't sufficient to designate a repository for ancient stories to be housed. Nor is it enough to swap stories among friends about “the way it used to be.” Even though the fathers did not do right, we are responsible to make sure the generation to come knows the truth—even the children “who would be born” need to have their “hope in God, and not forget the works of God, but keep His commandments” (Psalm 78:6-7).

How is that going to happen unless God's people assume the responsibility of gifting toward the future? We must focus on legacy tools that will last far beyond our short lifetimes and reach into the coming generations. Buildings, properties, and museums have a place among those tools. But this is the biblical perspective that must be understood: Godly gifting is heart gifting. That's exactly why Jesus said:

“Do not lay up for yourselves treasures on earth, where moth and rust destroy and where thieves break in and steal; but lay up for yourselves treasures in heaven, where neither moth nor rust destroys and where thieves do not break in and steal. For where your treasure is, there your heart will be also.”
(Matthew 6:19-21) ●

Dr. Morris is Chief Executive Officer of the Institute for Creation Research.





Be part of building a legacy for the next generation.

Too often, our children face challenges to their trust in God before they can grow deep roots, and the battle often begins when they first enter school. Our “top notch” educational system teaches that evolution, not God, is responsible for the universe. These two opposing worldviews battle in a war of beliefs...and we all must join the fight.

ICR demonstrates how science confirms biblical creation. Our scientists and scholars provide answers to the most challenging questions of faith and science. They have dedicated their lives to researching the scientific evidence that confirms the historical accuracy of the Bible—from the very first verse. ICR exists to battle for the truth.

We have the purpose, the passion, and the plans.



Now we need you!
Stand with us.

Dallas Museum of Science and Earth History

For more information and to donate, go to ICR.org/Museum

Genetic Clocks Verify Recent Creation

The idea of an evolutionary genetic clock in which DNA sequences steadily change, like a clock ticking off time, has played a major role in the ideas shaping modern biology. As employed by evolutionists, this time-measuring technique compares DNA sequences between different species to estimate supposed rates of evolution based on the amount of changes in individual DNA letters (A, T, C, or G) in the DNA. When two totally different types of creatures are compared (e.g., horses and chickens), their differences are made to match up with evolutionary time through a procedure that calibrates the data with deep-time estimates taken from paleontology.¹ While scientists that work in the field know this,

the general public is completely unaware of this little trick.

Despite the fact that the genetic clock data are clearly manipulated to conform to vast amounts of evolutionary time, the results rarely support the overall evolutionary story. In fact, the following problems are often encountered.

- 1) Different genes give widely different evolutionary rates.
- 2) Different types of organisms exhibit different rates for the same type of gene sequences.
- 3) Genetic-clock dates that describe when these creatures supposedly split off to form new creatures (called divergence) commonly disagree with paleontology's timescale despite being calibrated by it.¹

Rare vs. Common Genetic Variation

Common variations observed in the human genome are believed to be part of the original design of Adam and Eve's genomes. When rare variations occur, the outcome is most often a genetic mutation. Both common and rare variations create diversification in the human genome.

What kind of data would researchers get if the assumptions of evolution and deep time were not used to bias the molecular-clock models? Would the DNA sequence variation actually provide usable information to help test creationist predictions about origins? Interestingly, we have a variety of reported studies from both secular scientists and creationist researchers in which DNA clocks were measured empirically—without deep-time calibrations—and yielded ages of only 5,000 to 10,000 years, not millions. Each of these test cases are discussed below, but first let's visit the closely related concept of *genetic entropy*.

Genomic Entropy and Genetic Clocks

During the production of egg and sperm, DNA mutations can occur and be passed on to the next generation. When these are empirically measured within a family's pedigree, an estimate of the mutation rate can be achieved. Scientists have actually measured this rate in humans in a number of studies and found it to be between 75 and 175 mutations per generation.²⁻⁶

Using this known data about mutation rates, a variety of researchers have used computer simulations to model the accumulation of mutations in the human genome over time.⁷⁻¹³ It was found that over 90% of harmful mutations *fail to be removed* over time and are passed on to subsequent generations. Because this buildup of mutations would eventually reach a critical level, it was postulated that humans would eventually go extinct at a point called *error catastrophe*.^{14,15} This incessant process of genome degradation over time with each successive generation is called *genetic entropy*.^{14,15} More amazing, the process of genetic entropy is closely mirrored by the trend of declining human lifespan documented in the Bible, especially in the 4,300 years since the global Flood.^{12,15-17} In addition to these genetic simulation studies, prominent evolutionists have shown that the problem of mutation accumulation in the human genome is accompanied by

the inability of natural selection to remove them—an aspect of genetics completely contrary to evolutionary assumptions.^{5,18}

The conclusions of these studies in modeling genetic entropy have been spectacularly confirmed by two additional secular studies based on empirical data that provided the same results, along with a timescale that paralleled biblical history.^{4,5} Both studies examined the amount of rare single nucleotide differences in the protein-coding regions (exons) of the human genome called the *exome*.^{19,20} One study analyzed 2,440 individuals and the other 6,515. Over 80% of the rare variability was considered to be harmful (associated with heritable disease), and researchers attributed the presence of these mutations to “weak purifying selection.”¹⁹ This essentially means that the alleged ability of natural selection to remove these harmful variants from human populations was somehow powerless to do so—the exact same results observed in the computer simulation studies discussed above.^{8,11-13}

Lest critics say that these mtDNA studies are suspect because they were performed by creationists, it should be noted that evolutionists were actually the first to document these biblically supportive timeframes.

A major benefit of this type of genetic data is the fact that protein-coding regions are less tolerant of mutation than other parts of the genome, providing more reliable historical genetic information about human populations than more common types of variability. In addition, this type of data can be conveniently integrated into demographic models over known historical time and geographical space. When the researchers did this, they discovered a very recent and massive burst of human genetic diversification primarily associated with genetic entropy. One of the research papers stated, “The maximum likelihood time for accelerated growth was 5,115 years ago.”¹⁹ The other paper uncovered a similar timeline, which places the beginning of human genetic diversification close to the Genesis Flood and

subsequent dispersion of people groups at the Tower of Babel. Importantly, this recent explosion of rare genetic variants clearly associated with genetic entropy also follows the same pattern of human life expectancy rapidly declining after the Flood.^{15,17}

Mitochondrial DNA Variability and Genetic Clocks

One other important realm of molecular-clock research demonstrating a recent creation comes from examining mutation rates in mitochondrial genomes.²¹ The mitochondrial DNA (mtDNA) of an animal is typically inherited from the mother's egg cell, and the mtDNA mutation rates can accurately be measured in pedigrees to produce a specific clock for that species. When these clocks are calibrated not by evolutionary timescales but by using the organism's known generation time, a more realistic and unbiased estimate of that creature's genetic clock can be obtained. By comparing these mitochondrial clocks in fruit flies, roundworms, water fleas, and humans, one creation scientist demonstrated that a creation event for all of these organisms (including humans) occurred not more than 10,000 years ago.²¹

Other creation scientists also conducted a study into human mtDNA variation in which they statistically analyzed over 800 different sequences and reconstructed a close approximation of Eve's original mitochondrial genome.^{15,22} They found that “the average human being is only about 22 mutations removed from the Eve sequence, although some individuals are as much as 100 mutations removed from Eve.”¹⁵ The most recent empirical estimate of the mutation rate in human mitochondria is about 0.5 per generation.²³ Based on this rate, even for the most mutated mitochondrial sequences, it has been determined that “it would only require 200 generations (less than 6,000 years) to accumulate 100 mutations.”¹⁵

Lest critics say that these mtDNA studies are suspect because they were performed

Researchers have calculated that ‘mitochondrial Eve’—the woman whose mtDNA was ancestral to that in all living people—lived 100,000 to 200,000 years ago in Africa. Using the new clock, she would be a mere 6000 years old.

by creationists, it should be noted that evolutionists were actually the first to document these biblically supportive timeframes. Buried within a secular research paper back in 1997, the same trends recently observed by creationists regarding human mtDNA mutation rates were first reported but received little attention in the evolutionary community. The authors of the paper stated, “Using our empirical rate to calibrate the mtDNA molecular clock would result in an age of the mtDNA MRCA [most recent common ancestor, or the first human woman] of only ~6,500 years.”²⁴

One year later, another secular researcher remarked on this study, stating,

Regardless of the cause, evolutionists are most concerned about the effect of a faster mutation rate. For example, researchers have calculated that “mitochondrial Eve”—the woman whose mtDNA was ancestral to that in all living people—lived 100,000 to 200,000 years ago in Africa. *Using the new clock, she would be a mere 6000 years old.*²⁵

The article continued to note that the new findings of faster mutation rates pointing to mitochondrial Eve about 6,000 years ago also contributed to the development of mtDNA research guidelines used in forensic investigations adopted by the FBI. Now, over 17 years later, and using even more mtDNA data, creation scientists are spectacularly confirming this previous unheralded discovery.

In addition to the mtDNA clock data, scientists have also analyzed the Y chromosomes of modern men, which they found to be only about 300 mutations on average different from the consensus sequence of a Y-chromosome Adam.¹⁵ The researchers state that “even if we assume a normal mutation rate for the Y chromosome (about 1 mutation per chromosome per generation), we would only need 300 generations (about

six thousand years), to get 300 mutations.”¹⁵ As with the previous mtDNA work, this is the most straightforward way to apply the DNA clock concept, which also provides data in perfect agreement with a biblical timeframe for the origins of man.

Perhaps the most remarkable data supporting a young creation were recently published by a large group of secular scientists who are involved with mapping DNA variation across the entire human genome.²⁶ This massive effort has just produced a huge dataset that the researchers call “a global reference for human genetic variation.” In their report, they state:

Analysis of shared haplotype lengths around f_2 variants suggests a median common ancestor ~296 generations ago (7,410 to 8,892 years ago), although those confined within a population tend to be younger, with a shared common ancestor ~143 generations ago (3,570 to 4,284 years ago).²⁶

Amazingly, these are fairly accurate dates for both the original creation event and the Babel dispersion after the Flood. The confined populations are descended from the people groups created at the Tower of Babel when the languages became confused. Of course, the median common ancestor of all humans would represent Adam and Eve.

Conclusion

The evolutionary paradigm of a molecular clock is deeply flawed in that it assumes evolution on a grand scale and literally involves conducting the whole analysis as a hypothetical exercise rather than as an empirical experiment. In contrast, creation scientists and even some secular researchers have taken a straightforward empirical approach without any assumptions about time, and the results yield dates of not more than about 6,000 to 10,000 years. Thus, when the mythical evolutionary restrictions are removed and the data are analyzed empirically, biblical timescales are the result. ●

References

- Tomkins, J. P. and J. Bergman. 2015. Evolutionary molecular genetic clocks—a perpetual exercise in futility and failure. *Journal of Creation*. 29 (2): 26-35. Much of the content of this current article was published previously at a more technical level. See Tomkins, J. P. 2015. Empirical genetic clocks give biblical timelines. *Journal of Creation*. 29 (2): 3-5.
- Nachman, M. W. and S. L. Crowell. 2000. Estimate of the mutation rate per nucleotide in humans. *Genetics*. 156 (1): 297-304.
- Kondrashov, A. S. 2003. Direct estimates of human per nucleotide mutation rates at 20 loci causing Mendelian diseases. *Human Mutation*. 21 (1): 12-27.
- Xue, Y. et al. 2009. Human Y Chromosome Base-Substitution Mutation Rate Measured by Direct Sequencing in a Deep-Rooting Pedigree. *Current Biology*. 19 (17): 1453-1457.
- Lynch, M. 2010. Rate, molecular spectrum, and consequences of human mutation. *Proceedings of the National Academy Science*. 107 (3): 961-968.
- Campbell, C. D. and E. E. Eichler. 2013. Properties and rates of germline mutations in humans. *Trends in Genetics*. 29 (10): 575-584.
- Sanford, J. et al. 2007. Mendel’s Accountant: A biologically realistic forward-time population genetics program. *Scalable Computing: Practice and Experience*. 8 (2): 147-165.
- Sanford, J. et al. 2007. Using Computer Simulation to Understand Mutation Accumulation Dynamics and Genetic Load. *Lecture Notes in Computer Science*. 4488: 386-392.
- Sanford, J. C. and C. W. Nelson. 2012. The Next Step in Understanding Population Dynamics: Comprehensive Numerical Simulation. *Studies in Population Genetics*. M. C. Fusté, ed. InTech, 117-136.
- Brewer, W. H., J. R. Baumgardner, and J. C. Sanford. 2013. Using Numerical Simulation to Test the “Mutation-Count” Hypothesis. *Biological Information: New Perspectives*. R. J. Marks III et al, eds. Hackensack, NJ: World Scientific Publishing, 298-311.
- Gibson, P. et al. 2013. Can Purifying Natural Selection Preserve Biological Information? *Biological Information: New Perspectives*. R. J. Marks III et al, eds. Hackensack, NJ: World Scientific Publishing, 232-263.
- Nelson, C. W. and J. C. Sanford. 2013. Computational Evolution Experiments Reveal a Net Loss of Genetic Information Despite Selection. *Biological Information: New Perspectives*. R. J. Marks III et al, eds. Hackensack, NJ: World Scientific Publishing, 338-368.
- Sanford, J. C., J. R. Baumgardner, and W. H. Brewer. 2013. Selection Threshold Severely Constrains Capture of Beneficial Mutations. *Biological Information: New Perspectives*. R. J. Marks III et al, eds. Hackensack, NJ: World Scientific Publishing, 264-297.
- Sanford, J. 2008. *Genetic Entropy and the Mystery of the Genome*, 3rd ed. Waterloo, NY: FMS Publications.
- Sanford, J. C. and R. W. Carter. 2014. In Light of Genetics... Adam, Eve, and the Creation/Fall. *Christian Apologetics Journal*. 12 (2): 51-98.
- Osgood, J. 1981. The Date of Noah’s Flood. *Creation*. 4 (1): 10-13.
- Sanford, J., J. Pamplin, and C. Rupe. Genetic Entropy Recorded in the Bible? FMS Foundation. Posted on kolbcenter.org July 2014.
- Crow, J. F. 1997. The high spontaneous mutation rate: Is it a health risk? *Proceedings of the National Academy of Sciences*. 94 (16): 8380-8386.
- Tennesen, J. A. et al. 2012. Evolution and Functional Impact of Rare Coding Variation from Deep Sequencing of Human Exomes. *Science*. 337 (6090): 64-69.
- Fu, W. et al. 2013. Analysis of 6,515 exomes reveals the recent origin of most human protein-coding variants. *Nature*. 493 (7431): 216-220.
- Jeanson, N. 2013. Recent, Functionally Diverse Origin for Mitochondrial Genes from ~2700 Metazoan Species. *Answers Research Journal*. 6: 467-501.
- Carter, R. W. 2007. Mitochondrial diversity within modern human populations. *Nucleic Acids Research*. 35 (9): 3039-3045.
- Madrigras, L. et al. 2012. High mitochondrial mutation rates estimated from deep-rooting costa rican pedigrees. *American Journal of Physical Anthropology*. 148 (3): 327-333.
- Parsons, T. J. et al. 1997. A high observed substitution rate in the human mitochondrial DNA control region. *Nature Genetics*. 15 (4): 363-368.
- Gibbons, A. 1998. Calibrating the Mitochondrial Clock. *Science*. 279 (5347): 28-29. Emphasis added.
- The 1000 Genomes Project Consortium. 2015. A global reference for human genetic variation. *Nature*. 526 (7571): 68-74.

Dr. Tomkins is Research Associate at the Institute for Creation Research and received his Ph.D. in genetics from Clemson University.



The Imaginary Piltdown Man

R A N D Y J . G U L I U Z Z A , P . E . , M . D .

Focused and vividly imagining his next move, the young boy is filled with determination as his mind pictures the football soaring. He runs, positions his legs, and says aloud, “This time I’m gonna kick that ball!” On his back a moment later, a dazed and embarrassed Charlie Brown stares up at Lucy gleefully holding the football and wonders why he fell for her ploy yet again. His oft-repeated blunder over the almost 50 years Charles Schulz produced the *Peanuts* cartoon evidently connected with people who empathized with Brown as either gullible, eternally optimistic, or both.

A mysterious mental interplay exists between imagination, visualization, experience, facts, and beliefs that our mind interprets and reconciles. Likely, these constructs help shape and are reciprocally shaped by our worldviews and our wills.

“Seeing” is a sophisticated mental process in which the brain rapidly associates incoming data from the eyes and other sensors with previously learned information stored in the brain. Matching data-information sets are further refined into a sensation we perceive as “sight.” Imagination enables someone to form mental images or elaborate sensations that are not necessarily connected to inbound data, stored information, or objective human experience. Careful researchers of evolutionary theory appreciate the constant tension between unavoidable imagination that may produce insightful hypotheses and the reckless gullibility that can lead to embarrassing blunders.

Fertile Imaginations Nourish Evolutionary Theory

The role imagination can play in the mental processing of data helps explain how someone who believes the naturalistic evolutionary worldview can look at fossil bones and “see” transitional features or look at an odd fish from the ocean depths and “see” primitive features that others don’t.

Eminent evolutionist Stephen Jay Gould details why inher-

ent elements of evolutionary theory *must* appeal to our imaginative ability to “see” the unseen things from the past. He describes one such element as *extrapolation* or scope, in which researchers use “history from data of an imperfect record that cannot, in any case, ‘see’ past causes directly, but can only draw conclusions from preserved results of these causes.” This is accomplished, he says, by explaining “large-scale results by extrapolation from short-term processes... [and] extrapolation to longer times and effects of evolutionary changes actually observed in historic times (usually by analogy to domestication and horticulture).”¹

Extrapolation in the sense Gould identifies isn’t the same as an inferential conclusion but always invokes some imagination to project from the known to the unknown—it fills in the gaps. Intervening time or distance is usually proportional to how much conjecture is summoned; the larger the gap, the more imagination is needed. For instance, what explains the apparent design of interrelated parts in living things? Since people know that design is the cause of multiple parts purposely working together in man-made things, many people infer that intelligent design is also the cause of such parts in living creatures. Darwinists, however, see how organisms can change somewhat in observable time, extrapolate this observation to immense time periods, and imagine radical changes in organisms.

Evolutionary biologist Richard Dawkins explains:

It took a very large leap of the imagination for Darwin and Wallace to see that, contrary to all intuition, there is another way and, once you have understood it, a far more plausible way, for complex “design” to arise out of primeval simplicity. A leap of the imagination so large that, to this day, many people seem still unwilling to make it.²

Scientists who question appeals to imagination in lieu of data are merely dismissed by top evolutionary authorities like Jerry Coyne: “It is not valid, however, to assume that, because one man cannot imagine such pathways, they could not have existed.”³ Other

such authorities personally disparage critics of illusory evolutionary mechanisms:

Anyone can state at any time that he or she cannot imagine how evolutionary mechanisms might have produced a certain species, organ, structure. Such statements, obviously, are personal—and they say more about the limitations of those who make them than they do about the limitations of Darwinian mechanisms.⁴

Since evolutionists must extrapolate, people should expect their conclusions to stretch beyond what observable evidence will bear. But when this is pointed out, they craftily argue that a detractor's inability to imagine a process is not valid evidence against the reality of the imagined process. Nevertheless, because evolutionary theory rests on a pillar of extrapolative imagination—nearly unbridled imagination—there is clearly the susceptibility for interpretive blunders or even outright hoaxes. Therefore, repetitions of these blunders are not simply mistakes.

Seeing What You Always Imagined

On January 17, 1913, America's leading scientific journal, *Science*, described a memorable meeting in England to report "a discovery of the greatest importance...the nearest approach we have yet reached to a 'missing link'...probably few will deny that *Eoanthropus* ['early man'] *Dawsoni* is almost if not quite as much human as simian [higher primate]."⁵

Excitement bubbled over fossil discoveries near Piltdown, England, of an almost totally human cranial cap in close proximity to a partial jawbone nearly identical to that of an ape. *Eoanthropus* fit evolutionary expectations beautifully, in contrast to Eugene Dubois' 1894 report of *Pithecanthropus* ("ape man"), whose humanlike lower limbs and apelike head made scientists "angry and skeptical" because "a being with a human head and an apelike body was expected, not the other way around."⁶



The Piltdown skull fragments with a full-size replica in the background.

Image Credit: Copyright © 2012 A. Olmos. Adapted for use in accordance with federal copyright (fair use doctrine) law. Usage by ICR does not imply endorsement of copyright holder.

When the *Eoanthropus*' apelike jaw was carefully examined, researchers unmistakably saw that "molars 1 and 2 are typically human," though "their cusps have been worn perfectly flat by mastication [chewing]."⁵ Another expert closely inspected impressions on the inside of the humanlike cranium left by arteries housed between the brain and skull. He distinctly saw "the arrangement of meningeal arteries was typically simian, as was a deep notch in the occipital region."⁵

But evidently their minds saw obvious things that weren't really there. *Eoanthropus*, or Piltdown



John Cooke's 1915 painting of the Piltdown men: anatomist Arthur Keith in the white coat; behind him to the right, Arthur Smith Woodward, next to Charles Dawson, who discovered the find.

Image Credit (painting): Public domain. Image Credit (photograph): Copyright © 2012 Nils Jorgensen/ Rex Features. Adapted for use in accordance with federal copyright (fair use doctrine) law. Usage by ICR does not imply endorsement of copyright holder.

Man, constitutes a major evolutionary blunder. The world's best evolutionists were duped for 40 years before the find was revealed as a forgery in a 1954 *Science* publication, which included some exculpatory commentary that there had always been a few skeptics.⁷ This "missing link" consisted of a genuine human cranium and an orangutan's jaw bearing molars manually flattened with a file—all stained with a man-made patina to look ancient. *The New York Times* summed up the situation:

The skull eventually brought knighthoods to its three leading expositors, Sir Arthur Smith Woodward, Sir Grafton Elliot Smith and Sir Arthur Keith. These learned gentlemen were honored after having spent many years and many pages discoursing on the very human features they discerned in Piltdown man's apelike jaw and the very apelike features they found in his human cranium. The Piltdown skull illustrates the ever-present danger for scientists of seeing what they expect to see.⁸

As evolutionists, these knighted but misguided scientists were rooted in the kind of imaginary extrapolationism that fosters visualizations and mental constructs that do not exist in a reality outside their minds. And their scientific prodigies are trapped in the same way.

Extrapolation in the 21st Century

On May 19, 2009, researchers held a memorable press conference at the American Museum of Natural History hosted by New York City's mayor to unveil a discovery that purportedly yielded "unprecedented insight into our ancestry." It was headlined as "Fossil Ida: Extraordinary find is 'missing link' in human evolution."⁹ Elation boiled over about an alleged 47-million-year-old fossil, *Darwinius masillae*, of a lemur-like animal dubbed "Ida."

Ida's evolutionary significance was evidently in the eye of the beholder. "The more you look at Ida, the more you can see, as it were, the primate in embryo,"⁹ stated British naturalist Sir David Attenbor-



The infamous *Ida* fossil. Initially hailed as one of the most complete primate fossils ever found and a 47-million-year-old human ancestor, it was revealed only months later to be an extinct lemur.

Image Credit: Copyright © 2009 Atlantic Productions, Ltd. Adapted for use in accordance with federal copyright (fair use doctrine) law. Usage by ICR does not imply endorsement of copyright holder.

ough, who narrated the BBC documentary on *Darwinius*, *Uncovering Our Earliest Ancestor: The Link*. George Washington University anthropologist Brian Richmond summed up his mental picture as “This specimen looks like a really early fossil monkey that belongs to the group that includes us.”¹⁰

Paleontologist Dr. Jørn Hurum led *Darwinius*’ research team and underscored the significance of what they saw: “This will be the one pictured in the textbooks for the next hundred years.”⁹ His team’s credibility was buttressed by the inclusion of University of Michigan’s celebrated paleontologist Philip Gingerich, renowned for describing *Pakicetus* (“whale from Pakistan”), a diminutive, long-legged, land-dwelling creature that he “sees” as the ancient ancestor of whales.

However, in little over 100 days, the specter of another over-hyped evolutionary blunder loomed as headlines about *Darwinius* read, “Bone Crunching Debunks ‘First Monkey’ *Ida* Fossil Hype.”¹¹ Why? A top science journal, *Nature*, published critical research claiming *Darwinius* was not even close to the same evolutionary grouping as apes.¹²

Hurum defended his view of *Darwinius* by aptly stating that “there’s a lot of ways to do cladistics,” which intimates that the *Nature* researchers selectively cross-compared fossils and living animals to compile a cherry-picked set of comparative traits—a procedural possibility—to contrive a foreseen cladistics outcome. Thus, Gingerich called the *Nature* team’s explanation “implausible.”¹¹ Cherry-picked or not, the critics still ascribed the causality for most of the specimens’ similar traits as due to *convergent evolution*, a conclusion that is yet again just an extrapolated mental construct that exists only in the minds of the believers.

Convergence is not an observation demonstrated to flow from objectively discernable causes but is actually a declaration based on mental pictures of diverse organisms independently evolving similar traits as they are shaped over time by similar environmental pressures—pressures which themselves are not real, quantifiable forces but exist only as figures of speech.

Much Evolutionary Science Is a Mental Construct

Certainly, these blunders reinforce some immediate take-home cautions in assessing evolutionary conclusions. Namely, we need to recognize that in human origins research, fast fame can trump facts. We must realize critical fossil analysis is quite limited since only a few researchers get to study the specimens firsthand, and much original research, like with *Darwinius*, is carried out in relative secrecy. Remember, history shows that nearly all fossil finds are initially over-hyped and under-investigated. Because human origins research can be so subjective, one paleoanthropology researcher voiced a relevant admonition: “We have only to recall the Piltdown adventure to see how easily susceptible researchers can be manipulated into believing that they have actually found just what they had been looking for.”¹³

It is important to understand that the scientists’ susceptibility to these evolutionary blunders is inextricably tied to their theory-driven need to envision nonexistent things in subjective or fragmentary findings. Fertile imaginations necessarily grow from evolutionary theory’s pillar of imaginative extrapolationism, which constantly seeks to craft a storyline for Darwinism’s historical narrative. This contentment with mental constructs that only exist in one’s mind makes it easier to mentally project humanlike volitional abilities onto nature and see it as life’s grand designer.¹⁴

Evolutionists appear to largely live in what could be described as a will-driven reality—i.e., they see what they want to see; they see a past they believe has happened, and that desire drives their vision.

Extrapolating from the known to the unknown exposes the evolutionary theory to robust challenges. Extrapolation is only conceivably plausible if Earth’s history has been relatively uniform from a geological, climatic, astronomical bombardment, etc., standpoint. Therefore, every major catastrophe is a challenge to the assumption of uniformity—and the legitimacy to extrapolate. It is also valid to ask: How much of the “evidence” for evolution is only an extrapolated mystical mental construct that is driven more by sheer expectation than by science? ●

References

- Gould, S. J. 2002. *The Structure of Evolutionary Theory*. Cambridge, MA: Harvard University Press, 59.
- Dawkins, R. 1986. *The Blind Watchmaker*. New York: W. W. Norton, xii.
- Coyne, J. A. 1996. God in the Details. *Nature*. 383 (6597): 227-228.
- Miller, K. 2004. The Flagellum Unspun: The Collapse of “Irreducible Complexity.” *Debating Design: from Darwin to DNA*. Ruse, M. and W. A. Dembski, eds. New York: Cambridge University Press, 81-82.
- Haddon, A. C. 1913. *Eoanthropus Dawsoni*. *Science*. 37 (942): 91-92.
- Moore, R. 1962. *Evolution*. New York: Time Incorporated, 132.
- Straus, W. L., Jr. 1954. The Great Piltdown Hoax. *Science*. 119 (3087): 265-269.
- Wade, N. New Light on an Old Fraud. *The New York Times*, November 11, 1990.
- Randerson, J. Fossil *Ida*: Extraordinary find is ‘missing link’ in human evolution. *The Guardian*. Posted on theguardian.com May 19, 2009, accessed September 21, 2015.
- Handwerk, B. “MISSING LINK” FOUND: New Fossil Links Humans, Lemurs? *National Geographic News*. Posted on news.nationalgeographic.com May 19, 2009, accessed September 21, 2015.
- Keim, B. Bone Crunching Debunks ‘First Monkey’ *Ida* Fossil Hype. *Wired Science*. Posted on wired.com October 21, 2009, accessed September 21, 2015.
- Seiffert, E. R. et al. 2009. Convergent evolution of anthropoid-like adaptations in Eocene adapiform primates. *Nature*. 461 (7267): 1118-1121.
- Maienschein, J. 1997. The One and the Many: Epistemological Reflections on the Modern Human Origins Debates. *Conceptual Issues in Modern Human Origins Research*. Clark, G. A. and C. M. Willermet, eds. New York: Aldine de Gruyter, 413.
- Guliuza, R. 2011. Darwin’s Sacred Imposter: Natural Selection’s Idolatrous Trap. *Acts & Facts*. 40 (11): 12-15.

Dr. Guliuza is ICR’s National Representative.



Perfect Christmas Gifts from ICR!



NOW IN ITS 2nd EDITION

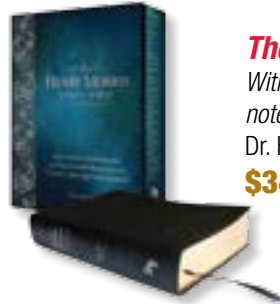
Unlocking the Mysteries of Genesis

Groundbreaking 12-DVD series at this special price!

\$99.00 DUTMG01

Includes one viewer guide—additional viewer guides sold separately.

Contains **English** closed captions and subtitles in **English, Spanish, Chinese, and Korean!**



The Henry Morris Study Bible

With apologetics commentary and explanatory notes

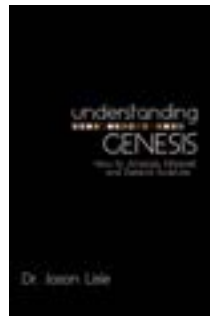
Dr. Henry Morris

\$34.99 each (reg. \$39.99) Hardcover:
BHMSB-C

\$59.99 each (reg. \$69.99) Imitation
Leather: BHMSB-IL

\$79.99 each (reg. \$94.99) Genuine
Leather: BHMSB-L

New!



Understanding Genesis: How to Analyze, Interpret, and Defend Scripture

Dr. Jason Lisle

\$14.99 (reg. \$16.99)

BUG – 496 pages

DVDs that educate. DVDs that equip.



Unlocking the Mysteries of Genesis Student Guide

Only **\$14.99!**

BUTMGSG

Buy two for \$22.00!

(regular price \$29.98)

SBUTMGSG



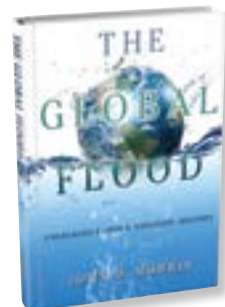
Creation Basics & Beyond

An In-Depth Look at Science, Origins, and
Evolution

\$7.99 (reg. \$9.99)

BCBAB

Also available through Kindle, NOOK,
and iBookstore.



The Global Flood

Unlocking Earth's Geologic History

Dr. John D. Morris

BTGF — Hardcover

\$12.99 (reg. \$19.99)

Also available through Kindle, NOOK,
and iBookstore.



Truth on Tour – 3-DVD set

Sale \$20.00 (reg. \$29.97)

SDTOT-02

The Ice Age: Real and Recent

(63 minutes)

Dr. Jake Hebert

**The Human Body:
Divine Engineering**

(67 minutes)

Dr. Randy Guliuzza

Dinosaurs and Man:

Five Clues to Dinosaur Origins

(63 minutes)

Brian Thomas



That's a Fact

\$7.99 (reg. \$9.99)

DTAF

Sixteen *That's a Fact* video shorts packed
into one educational DVD (28 minutes).

Please add shipping and handling to all orders
Offer good through December 31, 2015, while quantities last
Visit **ICR.org/store** or call **800.628.7640**



Soft-Tissue Time Paradox

In 1997, Dr. Mary Schweitzer published a series of articles detailing her observations of potential biomolecules within the trabecular (spongy) bone of a *Tyrannosaurus rex* femur found in strata conventionally dated at approximately 68 million years.^{1,2} Indeed, many observations of soft tissue in fossils dated at millions of years have occurred since 1977.³ The dilemma these observations present for deep-time advocates was immediately recognized, and controversy sprang up straightaway. How can soft tissue such as collagen survive intact for 68 million years when it has been experimentally established that at 10°C (around 50°F) only 1% of the original collagen in a bone sample can survive for longer than 700,000 years?⁴

In fact, Dr. Mike Buckley, a Royal Society University Research Fellow and Lecturer at the University of Manchester in the United Kingdom, stated, “Collagen decomposition would be much faster in the *T. rex* buried in the then-megathermal (>20°C) environment of the Hell Creek formation [collagen half-life ≈ 2,000 years]” in a *Science* journal technical comment.⁵ So, what we know experimentally raises serious questions about the age of the Schweitzer *T. rex* fossil. How should this conundrum be addressed?

Dr. Schweitzer and her colleagues chose to assume that “deep time” is a scientific fact and therefore have made several attempts since 1997 to prove that soft tissue could remain intact for 68 million years. But further publications in 2005, 2007, and 2013 only served to deepen the mystery of cellular and protein preservation over millions of years.⁶⁻⁸



Demineralized fragments of endosteally derived tissues lining the marrow cavity of the T. rex femur.

- (A) *The demineralized fragment is flexible and resilient and, when stretched (arrow), returns to its original shape.*
- (B) *Demineralized bone in (A) after air drying. The overall structural and functional characteristics remain after dehydration.*
- (C) *Regions of demineralized bone show fibrous character (arrows).*

Image Credit: Copyright © 2009 American Association for the Advancement of Science. Adapted for use in accordance with federal copyright (fair use doctrine) law. Usage by ICR does not imply endorsement of copyright holder.



In the 2013 article, Dr. Schweitzer proposed a preservation process involving iron and hydroxyl radicals.⁸ To test this hypothesis, the team soaked ostrich blood vessels in a compound of concentrated hemoglobin called HB. As an experimental control, they soaked a separate sample of ostrich blood vessels in distilled water. Extensive degradation of the control sample of ostrich blood vessels in distilled water was observed after three days, while the samples with HB showed no discernable degradation after two years. They concluded that the presence of an iron compound such as HB would allow preservation of soft tissue over millions of years. Is this a scientifically valid deduction?

Two chemists, John DeMassa and Edward Boudreaux, documented the many problems with this particular experiment and refuted its conclusion.⁹ But the overriding fact is Dr. Schweitzer and her colleagues did not establish their hypothesis; 68 million years is vastly different from two years—their inference is absurd.

With the iron preservation hypothesis refuted, the mystery of proteins in fossils continues to deepen. Are the dinosaur bones millions of years old as secular dogma demands, or are they thousands of years old as clearly indicated by the biblical account of creation? A recent creation solves the dilemma. ●

References

1. Schweitzer, M. H. et al. 1997. Heme compounds in dinosaur trabecular bone. *Proceedings of the National Academy of Sciences*. 94 (12): 6291-6296.
2. Schweitzer, M. H. et al. 1997. Preservation of biomolecules in cancellous bone of *Tyrannosaurus rex*. *Journal of Vertebrate Paleontology*. 17 (2): 349-359.
3. Thomas, B. 2013. A Review of Original Tissue Fossils and Their Age Implications. *Proceedings of the Seventh International Conference on Creationism*. Pittsburgh, PA: Creation Science Fellowship.
4. Buckley, M. and M. J. Collins. 2011. Collagen survival and its use for species identification in Holocene-lower Pleistocene bone fragments from British archaeological and paleontological sites. *Antiqua*. 1 (1): 1-7.
5. Buckley, M. et al. 2008. Comment on “Protein Sequences from Mastodon and *Tyrannosaurus rex* Revealed by Mass Spectrometry.” *Science*. 319 (5859): 33.
6. Schweitzer, M. H. et al. 2005. Soft-Tissue Vessels and Cellular Preservation in *Tyrannosaurus rex*. *Science*. 307 (5717): 1952-1955.
7. Schweitzer, M. H., J. L. Wittmeyer, and J. R. Horner. 2007. Soft tissue and cellular preservation in vertebrate skeletal elements from the Cretaceous to the present. *Proceedings of the Royal Society B*. 274 (1607): 183-197.
8. Schweitzer, M. H. et al. 2014. A role for iron and oxygen chemistry in preserving soft tissues, cells and molecules from deep time. *Proceedings of the Royal Society B*. 281 (1775): 20132741.
9. DeMassa, J. M. and E. Boudreaux. 2015. Dinosaur Peptide Preservation and Degradation. *Creation Research Society Quarterly*. 51 (4): 268-285.

Dr. Cupps is Research Associate at the Institute for Creation Research and received his Ph.D. in nuclear physics from Indiana University-Bloomington.



Homo naledi: New Claims of a Missing Link

Recent claims of a transitional species named *Homo naledi* have the anthropological world in an uproar.¹⁻³ The new fossil “species” is said to be a humanlike ancestor that neatly fills the gap between *Australopithecus* and our own genus, *Homo*.^{1,3} This seems to fit the human evolution story, but is the claimed hominin actually a newly discovered transitional species between man and ape?

The fossil discovery, made in the Rising Star cave system in South Africa in 2013, is located in a remote section called Dinaledi Chamber. The scientists had to travel through two thin passageways, one less than eight inches wide in places.³ These caves developed in dolomite (a limestone-like rock) in sediments of the Malmani Subgroup. Secular scientists date the cave system as developing during the Pliocene-Pleistocene—assigning ages as high as three million years.² However, creation scientists interpret caves like these as forming either during the receding-water phase of the Flood or right afterward, making the caves only thousands of years old.

Researchers recovered 1,550 scattered hominin bone pieces—alleged to represent at least 15 individuals that include infants, juveniles, and adults—from the clay-rich sediment of the cave floor. The secular scientists claimed these fragments are from a single, new species they named *Homo naledi*.¹ Interestingly, the cave had been entered by a previous caving group that rearranged some of the bones.²

What exactly is *Homo naledi*? Lee Berger, the lead researcher, claims the bones all fit one new transitional, or *mosaic*, species.¹ A transitional species should show partly evolved, in-between features of the two species it supposedly bridges. No fossil evidence for an undisputed transitional species exists anywhere for any kind of creature. A supposed mosaic species has features resembling unrelated kinds that are all somehow integrated. *Homo naledi*'s feet and hands fall in the range of modern

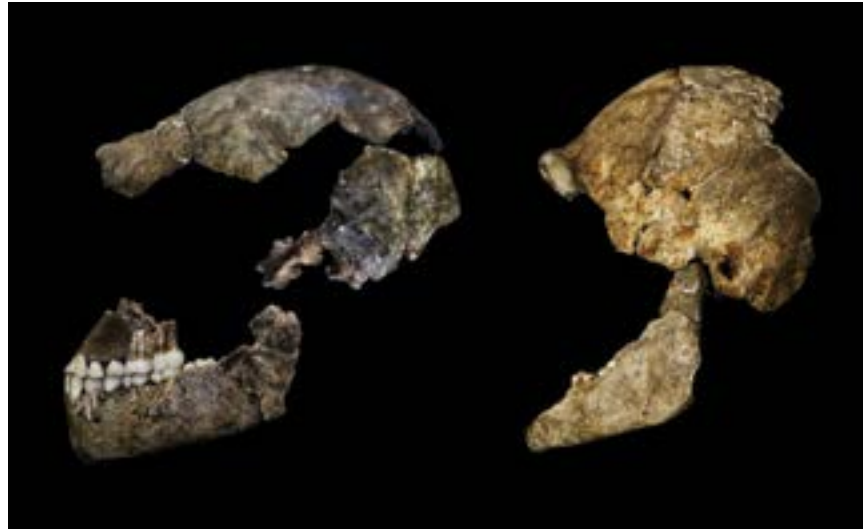


Image credit: Copyright (c) 2015 National Geographic Society. Sources: L. Berger and P. Schmid, University of the Witwatersrand, South Africa; J. Hawks, University of Wisconsin-Madison. Adapted for use in accordance with federal copyright (fair use doctrine) law. Usage by ICR does not imply endorsement of copyright holder.

humans,^{4,5} yet the pelvis and shoulders were more like *Australopithecus*—an extinct ape.⁶ Steve Churchill from Duke University told *National Geographic*, “If you’d found the foot by itself, you’d think some Bushman had died.”³

Also, the cranium pieces didn’t seem to fit the jaws. Despite what artistic depictions show, no substantially complete skulls were found with jaw and cranium attached. Instead, researchers found “tiny little brains stuck on these bodies that weren’t tiny,” as paleoanthropologist Fred Grine noted.³ All of these unusual sizes and mixtures of human and apelike traits indicate the bones may not even match. Presumed males and females may have come from different species. Could these paleontologists have fabricated a new species by cobbling together parts from unrelated kinds? Did they use the imaginings of their expectations—extrapolation—to put the pieces together? If so, it wouldn’t be the first time.⁷

However, what made this discovery unusual was the relatively loose and uncemented sediment in which the bones were found—all in the upper 20 cm (8 inches) of cave-filling floor sediment.² One recent geological report said, “Hominin remains in the area are generally encased in lithified clastic deposits [weathered debris cemented together].”² In other words, hardened sedimentary rocks encase most of these types of

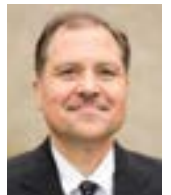
fossils, including Berger’s 2008 discovery of *Australopithecus sediba* only 10 miles away. That apelike fossil was dated by secular scientists as two million years old.⁸ Finding these “naledi” fossils in uncemented, loose sediment implies these fossils may be far more recently deposited than most other nearby finds, opening up the possibility they date to the post-Flood Ice Age, which would make *Homo naledi* only about 4,000 years old!

In next month’s *Acts & Facts*, we’ll examine inconsistencies with evolutionary age assignments related to this discovery. ●

References

- Berger, L. R. et al. *Homo naledi*, a new species of the genus *Homo* from the Dinaledi Chamber, South Africa. *eLife*. Posted on elifesciences.org September 10, 2015, accessed October 1, 2015.
- Dirks, P. H. G. M. et al. Geological and taphonomic context for the hominin species *Homo naledi* from the Dinaledi Chamber, South Africa. *eLife*. Posted on elifesciences.org September 10, 2015, accessed October 1, 2015.
- Shreeve, J. This Face Changes the Human Story. But How? *National Geographic News*. Posted on news.nationalgeographic.com September 10, 2015, accessed October 15, 2015.
- Harcourt-Smith, W. E. H. et al. The foot of *Homo naledi*. *Nature Communications*. Posted on nature.com October 6, 2015, accessed October 8, 2015.
- Kivell, T. L. et al. The hand of *Homo naledi*. *Nature Communications*. Posted on nature.com October 6, 2015, accessed October 8, 2015.
- Lubenow, M. 1992. *Bones of Contention*. Grand Rapids, MI: Baker Books.
- Gish, D. 1975. Man...Apes...Australopithecines...Each Uniquely Different. *Acts & Facts*. 4 (9).
- Although secular science interprets these bones as two million years old, they were likely deposited late in the Flood year, making them about 4,500 years old.

Dr. Clarey is Research Associate at the Institute for Creation Research and received his Ph.D. in geology from Western Michigan University.



THE PERFECT BALANCE OF OUR SOLAR SYSTEM

For decades it has been somewhat of a mystery to secularists as to why our solar system is structured the way it is: the four gas giants—Saturn and Jupiter, composed mainly of helium and hydrogen, and Uranus and Neptune—orbiting far away from the sun, and the four smaller rocky planets, the terrestrials—Mercury, Venus, Earth, and Mars—orbiting much closer to the sun.

Astronomers are puzzled that other recently discovered planetary systems look so different from ours. One evolutionist stated, “There are so many surprises in this field—almost nothing is turning out as we expected.”¹ Indeed, for the secular astronomer, basic planet construction is caught on the horns of a dilemma.

The predicament is this: Planet formation must occur quickly before the protoplanet is pulled into the star it’s orbiting, but getting tiny bits of protoplanet dust to join up into nice, round spheres and thence into a proper planet has not been found to work. Many stars in our Milky Way possess spinning disks of matter—orbiting gas and dust—but there are three significant problems in forming planets from these ingredients: death spirals, accretion (the gradual growth of planets by the accumulation of debris), and turbulence.² The building of planets large and small is an enigma, and “many aspects of the formation of the giant planets remain unresolved.”³ An evolutionist writing in the prestigious *Nature* journal stated,

The discovery of thousands of star systems wildly different from our own has demolished ideas about how planets form. Astronomers are searching for a whole new theory.⁴

But even if our neighboring planets somehow formed quick-

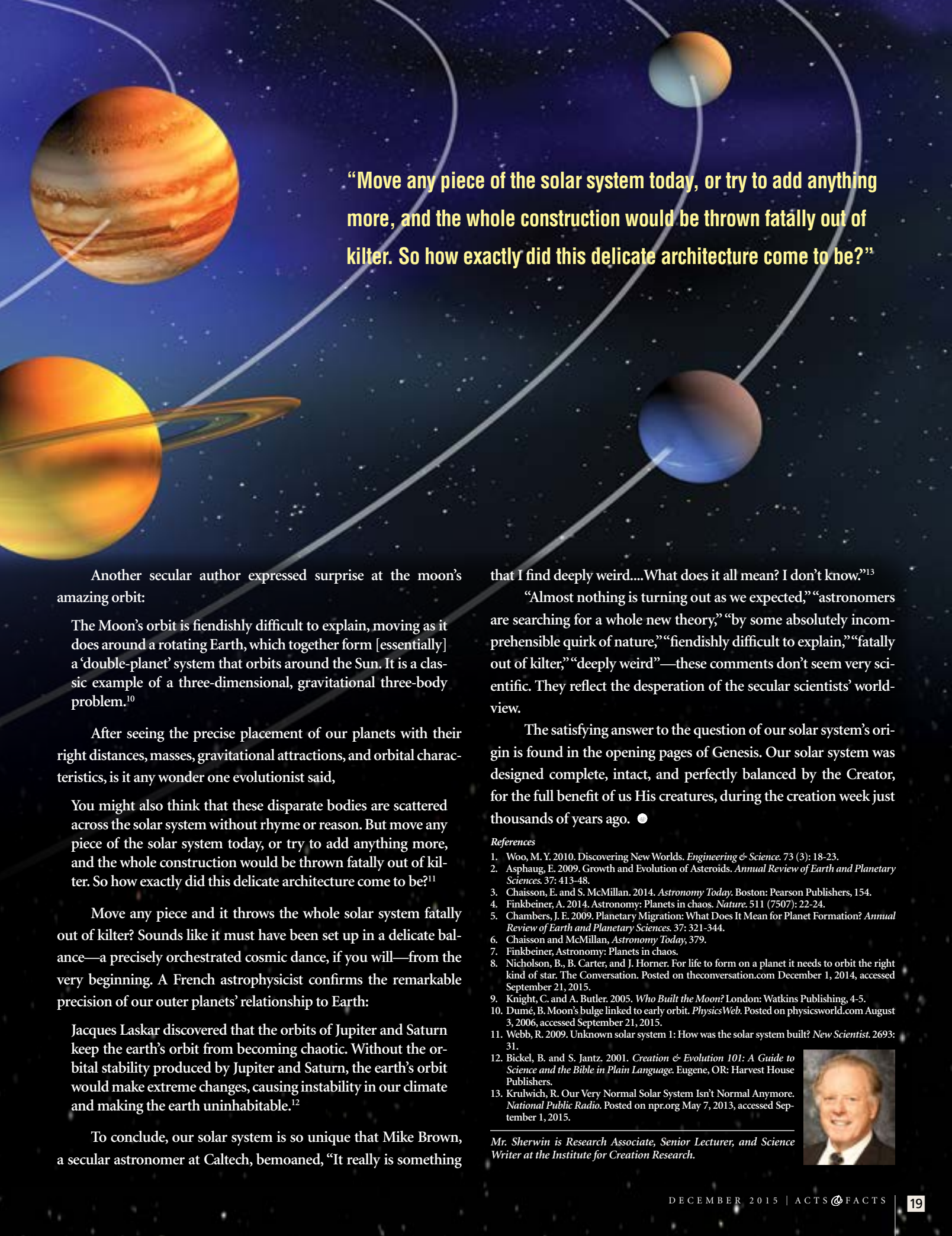
ly from accumulating space dust, recently discovered exoplanets (extrasolar planets) have changed secular solar system formation theory.⁵ Ours is certainly unique: “Today we know that planetary systems are quite common, but in many cases the ones we see differ significantly from our own.”⁶ Finkbeiner concurs, stating, “Perhaps the biggest question is why our Solar System is so different.”⁷

Exceptional star systems require, well, an exceptional star:

There are many factors that would make a star system too hostile for life to even get started, let alone survive for any period long enough to evolve. So what sort of star provides the perfect conditions for a habitable planet elsewhere in the universe?⁸

It so happens our sun provides the perfect conditions. It’s not too small (i.e., too dim or too cool) or too big (producing unfortunate charbroiled results from simply being too hot). Compared to the intense and violent activity seen on other stars, our sun is remarkably even-tempered and well-mannered—it doesn’t flare or pulse like other stars. When solar flares do occur, they are not so violent as to vaporize our oceans...or worse.

On the local level, our moon is equally amazing, leading two secular authors to ask, “Who built the Moon?” Knight and Butler state, “The Moon is 400 times smaller than the star at the centre of our solar system, yet it is also just 1/400th of the distance between the Earth and the Sun.” Consequently, the moon and sun appear exactly the same size in Earth’s sky—making precise solar eclipses possible. The authors also say, “By some absolutely incomprehensible quirk of nature, the Moon also manages to precisely imitate the perceived annual movements of the Sun each month.”⁹



“Move any piece of the solar system today, or try to add anything more, and the whole construction would be thrown fatally out of kilter. So how exactly did this delicate architecture come to be?”

Another secular author expressed surprise at the moon’s amazing orbit:

The Moon’s orbit is fiendishly difficult to explain, moving as it does around a rotating Earth, which together form [essentially] a ‘double-planet’ system that orbits around the Sun. It is a classic example of a three-dimensional, gravitational three-body problem.¹⁰

After seeing the precise placement of our planets with their right distances, masses, gravitational attractions, and orbital characteristics, is it any wonder one evolutionist said,

You might also think that these disparate bodies are scattered across the solar system without rhyme or reason. But move any piece of the solar system today, or try to add anything more, and the whole construction would be thrown fatally out of kilter. So how exactly did this delicate architecture come to be?¹¹

Move any piece and it throws the whole solar system fatally out of kilter? Sounds like it must have been set up in a delicate balance—a precisely orchestrated cosmic dance, if you will—from the very beginning. A French astrophysicist confirms the remarkable precision of our outer planets’ relationship to Earth:

Jacques Laskar discovered that the orbits of Jupiter and Saturn keep the earth’s orbit from becoming chaotic. Without the orbital stability produced by Jupiter and Saturn, the earth’s orbit would make extreme changes, causing instability in our climate and making the earth uninhabitable.¹²

To conclude, our solar system is so unique that Mike Brown, a secular astronomer at Caltech, bemoaned, “It really is something

that I find deeply weird....What does it all mean? I don’t know.”¹³

“Almost nothing is turning out as we expected,” “astronomers are searching for a whole new theory,” “by some absolutely incomprehensible quirk of nature,” “fiendishly difficult to explain,” “fatally out of kilter,” “deeply weird”—these comments don’t seem very scientific. They reflect the desperation of the secular scientists’ world-view.

The satisfying answer to the question of our solar system’s origin is found in the opening pages of Genesis. Our solar system was designed complete, intact, and perfectly balanced by the Creator, for the full benefit of us His creatures, during the creation week just thousands of years ago. ●

References

1. Woo, M. Y. 2010. Discovering New Worlds. *Engineering & Science*. 73 (3): 18-23.
2. Asphaug, E. 2009. Growth and Evolution of Asteroids. *Annual Review of Earth and Planetary Sciences*. 37: 413-48.
3. Chaisson, E. and S. McMillan. 2014. *Astronomy Today*. Boston: Pearson Publishers, 154.
4. Finkbeiner, A. 2014. Astronomy: Planets in chaos. *Nature*. 511 (7507): 22-24.
5. Chambers, J. E. 2009. Planetary Migration: What Does It Mean for Planet Formation? *Annual Review of Earth and Planetary Sciences*. 37: 321-344.
6. Chaisson and McMillan, *Astronomy Today*, 379.
7. Finkbeiner, Astronomy: Planets in chaos.
8. Nicholson, B., B. Carter, and J. Horner. For life to form on a planet it needs to orbit the right kind of star. The Conversation. Posted on theconversation.com December 1, 2014, accessed September 21, 2015.
9. Knight, C. and A. Butler. 2005. *Who Built the Moon?* London: Watkins Publishing, 4-5.
10. Dumé, B. Moon’s bulge linked to early orbit. *PhysicsWeb*. Posted on physicsworld.com August 3, 2006, accessed September 21, 2015.
11. Webb, R. 2009. Unknown solar system 1: How was the solar system built? *New Scientist*. 2693: 31.
12. Bickel, B. and S. Jantz. 2001. *Creation & Evolution 101: A Guide to Science and the Bible in Plain Language*. Eugene, OR: Harvest House Publishers.
13. Krulwich, R. Our Very Normal Solar System Isn’t Normal Anymore. *National Public Radio*. Posted on npr.org May 7, 2013, accessed September 1, 2015.

Mr. Sherwin is Research Associate, Senior Lecturer, and Science Writer at the Institute for Creation Research.



Q: Was Adam a Real Person?

A: Our anti-Bible world ridicules those who insist that Adam was a real, historical person, and consequently many Christians doubt Adam too. Old Testament professor John Walton recently wrote that perhaps “God chose one pair from the rest of the early hominids.”¹ Do we come from apes or Adam? Two links between Adam and history reveal the relevance of the world’s first man.

Evolution’s defenders from inside and outside Christian circles reason that since science has “proven” evolution, and since evolution by default displaces a historical Adam, that on the authority of science Adam never lived. According to evolution, extinct apelike creatures gave birth to children with slightly more humanlike traits than themselves. The next generation did the same, and so on for countless generations until they gradually transformed into, well, you and me! In evolution’s history, we link to apes, not Adam.

However, biblical history links us to Adam. The Bible reveals that since each person inherits a sin nature from Adam, each of us commits sins that earn the death penalty. The Lord Jesus, who never sinned, paid that penalty for us so that “as in Adam all die, even so in Christ all shall be made alive.”² If Adam never existed, then we have no basis for believing in a sin nature and no reason for Jesus to die in our place.

So, Adam matters! To the evolutionist, he must not exist, lest man be considered God’s special creation instead of the product of time and matter. To the biblical Christian, Adam must exist, lest the work of Christ on the cross and His resurrection from the grave be considered totally use-

less. So, which is it?

Scripture contains enough evidence to convince an honest seeker that Jesus, “the last Adam,”³ was just as real and relevant as the first Adam, but three sciences also support this.

First, the story of tiny changes transforming apes into men violates anatomy. Apes walk awkwardly when on two legs because God fitted their bones to also walk on all fours or swing in trees. If evolution adjusted any of these bones toward becoming more human, it would merely produce a deformed ape—one less likely to survive than its relatives.

Second, evolutionists dispute every proposed human ancestor fossil. A strange-looking fossil named *Homo naledi* supplies the latest example, with evolutionary anthropologists expressing doubt over whether or not it deserves to be named among humans.⁴ Future research may reveal it as merely a mashup of human and extinct ape parts.

Finally, genetics confirms Adam. About 100 new mutations accumulate every generation, so our generation holds a greater load of genetic “typos” than ever before.⁵ Mutations slowly erode information and set species on a collision course with extinction in only thousands of years. At this rate, why didn’t we all go extinct millions of years ago? We only have several thousand years’ accumulation of mutations in our genome, right



in line with the Bible’s claim of Adam as our forefather.

Anatomy, paleontology, and genetics confirm that we came from Adam and Eve, not animals. This gives us even more confidence in the reality of “Adam, who is a type of Him who was to come.”⁶ ●

References

1. Walton, J. H. 2015. *The Lost World of Adam and Eve*. Downer’s Grove, IL: InterVarsity Press, 177.
2. 1 Corinthians 15:22.
3. 1 Corinthians 15:45.
4. For example, see Chris Stringer’s comments in Ghosh, P. New human-like species discovered in S Africa. *BBC News*. Posted on bbc.com September 10, 2015, accessed October 7, 2015.
5. Kong, A. et al. 2012. Rate of *de novo* mutations and the importance of father’s age to disease risk. *Nature*. 488 (7412): 471-475.
6. Romans 5:14.

Mr. Thomas is Science Writer at the Institute for Creation Research.



Standing on the Word

Over 60 years ago, the Lord raised up Dr. Henry M. Morris to lead the biblical creation movement. Despite being rebuked after his first presentation in 1953, he persevered and took a stand against the compromise of Scripture.

He wrote *The Genesis Flood* in 1961 with Dr. John C. Whitcomb.

Dedicated to teaching people about biblical creation, Dr. Morris helped form the Creation Research Society in 1963. In 1970, he co-founded Christian Heritage College (now San Diego Christian College), and in 1972, he founded the Institute for Creation Research.

Always seeking to educate the next generation, Dr. Morris continued working and writing well into his 80s. The Lord blessed his life's work as the understanding of biblical creation has grown around the world. Today, ICR stands at another watershed moment. God has led us to build a state-of-the-art museum and planetarium that will showcase God's creation and educate our children and grandchildren for many generations to come.

“With respect to science...we not only want to win individual scientists to salvation in Christ but also to bring the sciences themselves under submission to God and His Word. This includes warning students about the deadly fallacies of evolutionary philosophy, and secular humanism in general.”

— Dr. Henry M. Morris, 2004
Morris, H. M. 2004. On the Vital Ministry of Teaching. *Acts & Facts*. 33 (1).

“It has now been almost 50 years since a committee of evangelical geologists rebuked me about a paper I had just presented at the 1953 convention of the American Scientific Affiliation. The paper was entitled, ‘Biblical Evidence for Recent Creation and a Worldwide Deluge.’ These men were all graduates of a prominent Christian college, yet [they] took strong exception to my premise that the Bible should govern our interpretation of the geological data, arguing that my position would prove an embarrassment to the Christian community...

“At ICR, we believe the Bible to be the verbally inspired, fully inerrant Word of God, completely true in science and history as well as in matters of ethics and spirituality. Furthermore, we are confident that God is able to say exactly what He means, so His Word should be taken literally unless the context clearly indicates a metaphorical meaning is intended. This is what the Bible itself teaches concerning itself.”

— Dr. Henry M. Morris, 2003
Morris, H. M. 2003. Let the Word of God Be True. *Acts & Facts*. 32 (1).



News clippings from the early days. Top: *The Roanoke Times*, April 10, 1957, reports Dr. Morris' new position as head of the civil engineering department at Virginia Tech. Bottom: The September 8, 1963 edition of *The Charleston News & Courier* announces Dr. Morris' speaking engagement at Ashley River, Baptist Church, Charleston, South Carolina.

For RICHER,



for POORER

These four little words in traditional wedding vows carry great significance. Unless they live in poverty, most newlyweds don't enter marriage expecting to stay poor or become poorer. Rather, couples hopefully expect to prosper over time through hard work and perseverance.

These words also reflect a central issue in charitable giving. One of the most common struggles people have in their giving decisions is an uneasy sense of loss at what is being given away. Some feel if they give, they will become "poorer" while the recipient becomes "richer." Instead of giving with a cheerful heart for the Lord's work (2 Corinthians 9:7), the cost of giving is carefully weighed based on how much they feel they can afford to lose. The question "How much poorer am I willing to become?" becomes the determining factor in deciding how much (or even if) they are willing to give.

Ironically, almost none of us feel poorer when we put money aside for retirement, invest in stock, or make a house payment. On the contrary, we feel better off financially and more secure by doing so, even though our net worth has not changed. We understand that we have simply transferred a portion of our resources into a different asset that will be beneficial in the future.

Scripture teaches a similar approach but with a completely opposite focus. To begin with, you and I don't really "own" anything. If God created the world as He claims in Genesis 1, He is the sole and rightful owner of the entire cosmos and everything in it. All things that exist—and all things we have—come from the God who "gives to all life, breath, and *all things*" (Acts 17:25, emphasis added). But we are God's stewards (Genesis 1:28). God has temporarily entrusted a portion of His resources into our care to accomplish His work here on Earth. And as the great Creator-Owner, God is just, and right, to

expect an accounting one day (1 Corinthians 3:10-15).

But a marvelous part of the message of Scripture is that we, as God's stewards, are privileged to participate with God as His "fellow workers" (1 Corinthians 3:9). And as co-laborers with God, we are promised great rewards for the work we do for Him. The Lord Jesus said as much when He counseled the disciples to "lay up for yourselves treasures in heaven" (Matthew 6:20), which Paul echoed when he commanded rich believers to be "ready to give, willing to share" to store up "for themselves a good foundation for the time to come" (1 Timothy 6:18-19). Notice that these "treasures" and "good foundations" are not being deposited in heaven for God, or for the poor and needy, or even for the lost—they are *for ourselves*. We are not losing anything when we give to God's work but are simply transferring available "assets" into an account that will pay everlasting dividends.

In view of these passages (and many others), feeling poorer when we give to the Lord's work is just flat out wrong! Rather, we are blessed and far richer when we give because we have willingly transferred some of our temporary, God-given resources into our heavenly account that will be waiting for us when we finally "retire" from this life.

So what treasures are you laying up in your heavenly account? Consider giving a portion to the ministry work here at the Institute for Creation Research. Our ministry is moving into new and exciting areas that will reach far beyond our lifetimes, and your generous gifts to ICR will establish a biblical legacy that will impact many "generation[s] to come," even the "children who would be born" (Psalm 78:6)! ●

Mr. Morris is Director of Donor Relations at the Institute for Creation Research.



PRAYERFULLY

CONSIDER

SUPPORTING

ICR

— GALATIANS 6:9-10 —

Through

- Online Donations
- Stocks and Securities
- Matching Gift Programs
- CFC (Federal/Military Workers)
- Gift Planning
 - Charitable Gift Annuities
 - Wills
 - Trusts

Visit icr.org/give and explore how you can support the vital work of ICR ministries. Or contact us at stewardship@icr.org or **800.337.0375** for personal assistance.

ICR is a recognized 501(c)(3) nonprofit ministry, and all gifts are tax-deductible to the fullest extent allowed by law.



Your *Unlocking the Mysteries of Genesis* DVD series is excellent! Thanks to all of you who put forth the time and effort to put it together. You present top-shelf research in a very engaging way. I am using it to teach my 6th–8th grade Sunday school class, and we are all thoroughly enjoying it. I have been a longtime reader of *Acts & Facts*, and it's one of the only publications that I look forward to reading cover to cover every month. So I am well-acquainted with the high caliber of your research and materials. This DVD series is helping me equip the next generation to know they can fully trust the reliability of Scripture so that they can go out and stand firm in their faith as they go and make disciples, who make disciples, who make disciples.

— K.N.



I really enjoyed reading your article “Penguin Eggs to Die For” in the October 2015 *Acts & Facts*. You have a way of writing that appeals to me, very easy to read and understand. Your article reminded me of an old black-and-white film (I don't remember the name) I saw on television back in the 60s portraying Scott wanting to reach the South Pole before “that Amundsen fellow” did. As I recall, the film depicted Scott utilizing ponies (that froze to death and the team ended up eating), whereas Amundsen used sleds and dogs, the British party eventually reaching the pole only to find a Norwegian flag stationed there, most of the party then dying on the return. In all the issues of *Acts & Facts* I've received thus far, I've found all of the articles to be informative, professional, and well-written. Even in articles where the information is way over my head, the author at least closes with an easily understandable statement that discloses the gist of the content.

— D.V.

A friend shared her *Unlocking the Mysteries of Genesis* DVDs with us, and we just ordered our own set. We are so grateful that you chose host



Markus Lloyd. He did an excellent job communicating sincerity and conviction of belief. But, even better, our grandchildren will relate to someone closer in age. We so hope Markus truly believes and that he's not just a great actor by profession. We're thrilled to see he will also be hosting *Made in His Image*, which we also purchased. Thank you for your incredible productions.

— C.D.

Editor's note: Markus is a believer and serves on staff at a Dallas-area church.

I am slowly catching up on my reading. The February 2015 *Acts & Facts* was great; it delivered one home run after another. My favorite quote, by Jerry Bergman, Ph.D.: “...natural selection only explains the SURVIVAL of the fittest, but the essential problem in Darwin's day, and today, is the ARRIVAL of the fittest.” I don't know if that is an original quote, but that is the best way I've ever heard that described.

— J.K.



The books I ordered arrived today, thank you. *The Genesis Flood* and the book on Job [*The Remarkable Record of Job*] are amongst my most treasured books apart from my Bible. As well as *The Long*

War Against God, they have had a profound influence on my Christian worldview, along with John MacArthur's expository preaching. What a great treat it will be to meet the authors in glory. I had to reorder the flood [book] as I think I loaned it to someone, but [it] wasn't returned. The book on Job is going to someone who is going through enormous grief and suffering. Thank you for your commitment to the scholarly [teaching of] the six-day creation account amidst the decline in evangelical ranks in the literal interpretation of Genesis.

— J.B.

Have a comment? Email us at editor@icr.org or write to Editor, P. O. Box 59029, Dallas, Texas 75229.

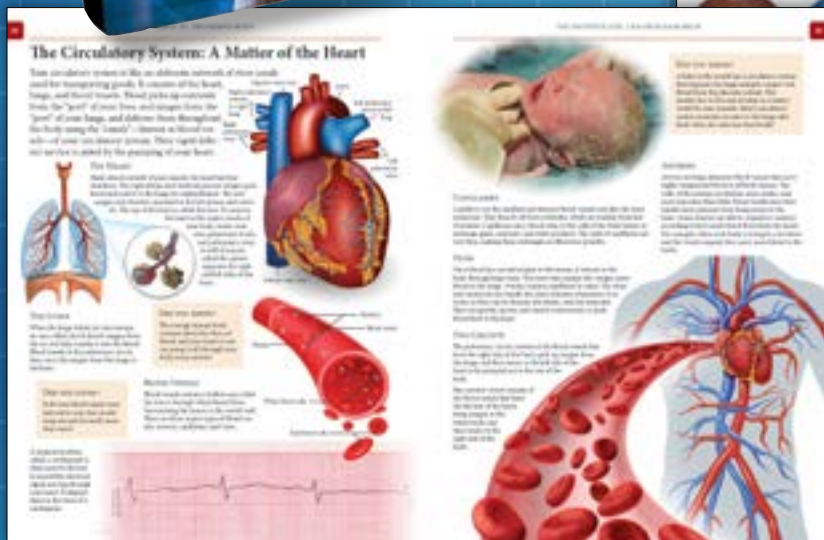
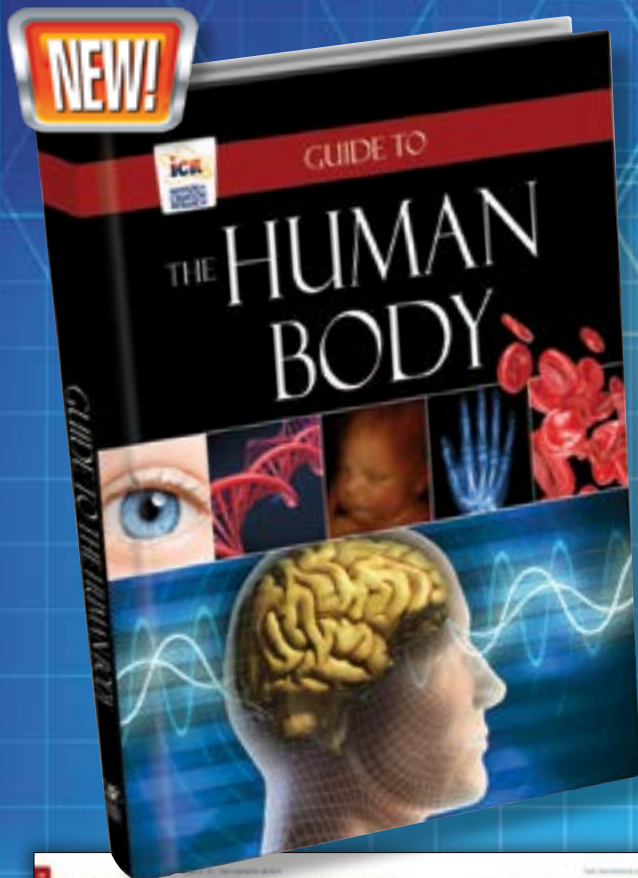
Note: Unfortunately, ICR is not able to respond to all correspondence.

Guide to the Human Body

Our fourth in the *Guide to* series—
add this to your science library!



P. O. Box 59029, Dallas, TX 75229
www.icr.org



The design of the human body inspires awe and fascination. *Guide to the Human Body* delves into the complex construction of the cell, a baby's development in the womb, the mechanics of our hands, and the incredible abilities of the brain. Discover astonishing facts about the circulatory, nervous, respiratory, and immune systems, and more. It's easy to see great wisdom and purpose in the design of the human body, and everything points back to one magnificent Engineer!

Guide to the Human Body \$19.99

BGTHB – Hardcover • Plus shipping and handling

SAVE \$30! Buy all four "Guide to" books for **\$49.95!**
SGTCBB – Hardcover

The perfect gift for homeschoolers or anyone who wants a detailed, easily understood science resource.
• Plus shipping and handling • Price available through Dec. 31, 2015



To order, call 800.628.7640 or visit ICR.org/store